

# **CPVC DUCT PIPE & FITTINGS**

**For Harrison Fume Exhaust Systems**



**HARRISON MACHINE & PLASTIC  
CORPORATION**

**Dimensions Catalog**



## **HARRISON MACHINE & PLASTIC CORPORATION**

11614 ST. RT. 88 | GARRETTSVILLE, OH

Ph. 330.527.5641 | Fax 330.527.5640

# **Table of Contents**

<b><u>Description</u></b>	<b><u>Page No.</u></b>
<b>CORZAN® CPVC Pipe</b>	<b>3</b>
<b>Bell Dimensions</b>	<b>4</b>
<b>90° Elbow</b>	<b>4</b>
<b>45° Elbow</b>	<b>5</b>
<b>Coupling</b>	<b>5</b>
<b>Reducer Coupling</b>	<b>6</b>
<b>Cap</b>	<b>7</b>
<b>True Wye</b>	<b>7</b>
<b>45° Wye</b>	<b>8</b>
<b>Tee</b>	<b>9</b>
<b>Rainskirt</b>	<b>10</b>
<b>Rain Cap 'Style A'</b>	<b>11</b>
<b>Rain Cap 'Style B'</b>	<b>12</b>
<b>Blind Flange</b>	<b>13</b>
<b>Butterfly Damper</b>	<b>14</b>
<b>Socket Flange</b>	<b>15</b>
<b>Blastgate Damper</b>	<b>16</b>
<b>Flex Hose Adapter – Bell End</b>	<b>17</b>
<b>Flex Hose Adapter – Plain End</b>	<b>18</b>
<b>Hoods</b>	<b>19</b>
<b>Transitions</b>	<b>19</b>

Note: The dimensions shown on the following pages of this catalog are essentially shown as “Center to End” dimensions, which apply to both belled end as well as plain end fittings. To determine “take-out” dimensions for belled end fittings, refer to the bell depths below to make appropriate calculations. 2

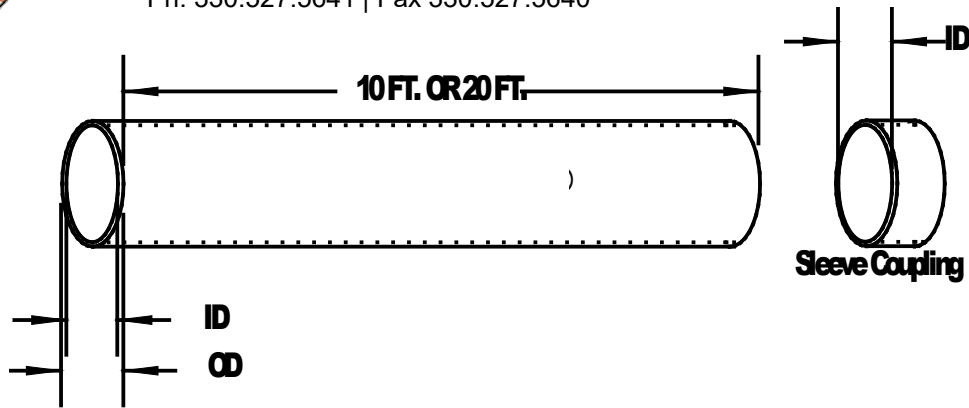


# HARRISON MACHINE & PLASTIC CORPORATION

11614 ST. RT. 88 | GARRETTSVILLE, OH

Ph. 330.527.5641 | Fax 330.527.5640

HMP 2020



## Corzan® CPVC Pipe

Part No.	Size	(O.D.)	(I.D.)	Wall	Approx. Wgt/Ft (Lbs)	Standard Length
	<b>Extruded</b>					
1833-PP-02	2"	2.375"	2.047"	0.154"	0.803	10 ft. or 20 ft.
1833-PP-03	3"	3.500"	3.042"	0.216"	1.660	10 ft. or 20 ft.
1833-PP-04	4"	4.500"	3.998"	0.237"	2.363	10 ft. or 20 ft.
1833-PP-05	5"	5.563"	5.016"	0.258"	2.874	10 ft. or 20 ft.
1833-PP-06	6"	6.625"	6.250"	0.187"	2.555	10 ft. or 20 ft.
1833-PP-08	8"	8.625"	8.250"	0.187"	3.349	10 ft. or 20 ft.
1833-PP-10	10"	10.750"	10.380"	0.187"	4.192	10 ft. or 20 ft.
1833-PP-12	12"	12.750"	12.380"	0.187"	4.986	10 ft. or 20 ft.
1833-PP-14	14"	14.000"	13.630"	0.187"	5.485	10 ft. or 20 ft.
1833-PP-16	16"	16.000"	15.630"	0.187"	6.273	10 ft. or 20 ft.
1833-PP-18	18"	18.000"	17.630"	0.187"	7.58	10 ft. or 20 ft.
1833-PP-20	20"	20.000"	19.500"	0.219"	9.146	10 ft. or 20 ft.
1833-PP-24	24"	24.000"	23.500"	0.250"	12.536	10 ft. or 20 ft.
	<b>Rolled</b>					
1833-PP-22	22"	22.000"	21.626"	0.187"	9.880	4 ft. w/ Coupling
1833-PP-26	26"	26.000"	25.626"	0.187"	11.670	4 ft. w/ Coupling
1833-PP-28	28"	28.000"	27.626"	0.187"	12.56	4 ft. w/ Coupling
1833-PP-30	30"	30.000"	29.626"	0.187"	13.46	4 ft. w/ Coupling
<b>Duct diameter thru 60" available. Contact factory for details.</b>						

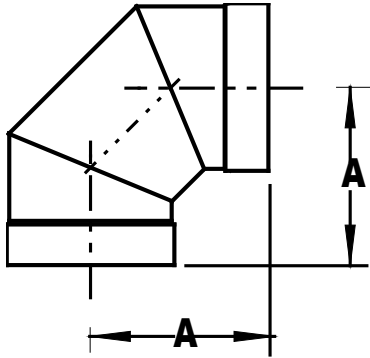


# HARRISON MACHINE & PLASTIC CORPORATION

11614 ST. RT. 88 | GARRETTSVILLE, OH

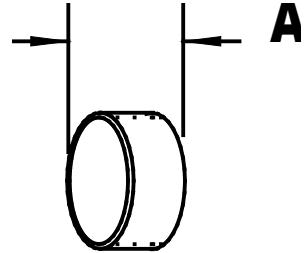
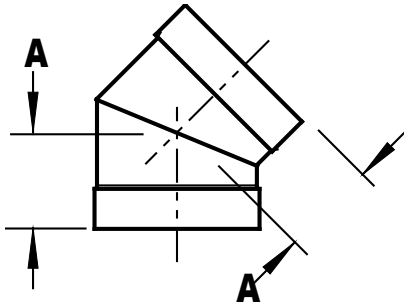
Ph. 330.527.5641 | Fax 330.527.5640

HMP 2020



90° Elbow Belled (3 piece)			
Part No.	Size	A	Approx. Wgt (Lbs)
1834-90-02	2 "	7.187 "	1
1834-90-03	3 "	9.000 "	2
1834-90-04	4 "	9.250 "	3
1834-90-05	5 "	9.937 "	5
1834-90-06	6 "	10.500 "	4
1834-90-08	8 "	11.437 "	6
1834-90-10	10 "	14.750 "	9
1834-90-12	12 "	15.625 "	12
1834-90-14	14 "	15.750 "	14
1834-90-16	16 "	18.000 "	19
1834-90-18	18 "	19.062 "	24
1834-90-20	20 "	21.500 "	33
1834-90-24	24 "	23.500 "	49

Bell Dimensions	
Size	Socket Depth
2 "	1.50"
3 "	1.75"
4 "	2.25"
5 "	2.75"
6 "	2.00"
7 "	2.25"
8 "	2.25"
9 "	2.25"
10 "	2.50"
11 "	2.50"
12 "	2.50"
14 "	2.50"
16 "	2.50"
18 "	2.50"
20 "	3.00"
24 "	3.00"



<b>45° Elbow Belled (2 piece)</b>			
<b>Part No.</b>	<b>Size</b>	<b>A</b>	<b>Approx. Wgt (Lbs)</b>
1834-45-02	2 "	3.000 "	0.5
1834-45-03	3 "	4.750 "	3
1834-45-04	4 "	4.937 "	2
1834-45-05	5 "	5.156 "	3
1834-45-06	6 "	5.375 "	3
1834-45-08	8 "	5.812 "	4
1834-45-10	10 "	6.250 "	5
1834-45-12	12 "	6.625 "	6
1834-45-14	14 "	6.875 "	6
1834-45-16	16 "	7.562 "	9
1834-45-18	18 "	8.000 "	10
1834-45-20	20 "	9.125 "	14
1834-45-24	24 "	10.000 "	21

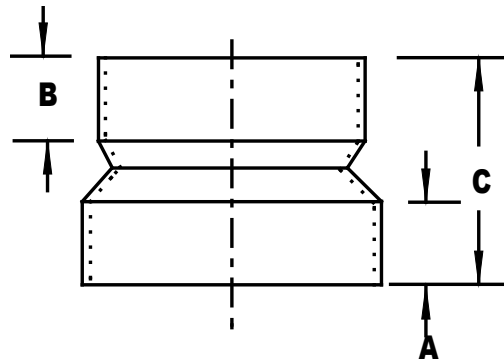
<b>Coupling Sleeved</b>			
<b>Part No.</b>	<b>Size</b>	<b>A</b>	<b>Approx. Wgt (Lbs)</b>
1834-CP-02	2 "	4.000 "	0.5
1834-CP-03	3 "	4.000 "	1
1834-CP-04	4 "	4.000 "	1
1834-CP-05	5 "	4.500 "	2
1834-CP-06	6 "	4.500 "	1
1834-CP-08	8 "	4.500 "	2
1834-CP-10	10 "	4.500 "	2
1834-CP-12	12 "	4.500 "	2
1834-CP-14	14 "	4.500 "	2.5
1834-CP-16	16 "	4.500 "	3
1834-CP-18	18 "	4.500 "	3
1834-CP-20	20 "	4.500 "	4
1834-CP-24	24 "	4.500 "	5



## HARRISON MACHINE & PLASTIC CORPORATION

11614 ST. RT. 88 | GARRETTSVILLE, OH

Ph. 330.527.5641 | Fax 330.527.5640



Reducer Coupling One Step (Bell x Bell)					
Part No.	Size	A	B	C	Approx. Wgt (Lbs)
1834-RC-0403	4" x 3"	1.750 "	1.750 "	7.000 "	1
1834-RC-0604	6" x 4"	2.000 "	1.750 "	7.000 "	2
1834-RC-0806	8" x 6"	2.250 "	2.000 "	8.000 "	2
1834-RC-1008	10" x 8"	2.500 "	2.000 "	8.000 "	3
1834-RC-1210	12" x 10"	2.500 "	2.500 "	8.000 "	4
1834-RC-1412	14" x 12"	2.500 "	2.500 "	7.250 "	4
1834-RC-1614	16" x 14"	2.500 "	2.500 "	9.000 "	5
1834-RC-1816	18" x 16"	2.500 "	2.500 "	8.250 "	5
Two Step (Bell x Bell)					
1834-RC-0804	8" x 4"	2.250 "	1.750 "	12.500 "	4
1834-RC-1006	10" x 6"	2.500 "	2.000 "	12.750 "	5
1834-RC-1208	12" x 8"	2.500 "	2.250 "	13.250 "	7
1834-RC-1410	14" x 10"	2.500 "	2.500 "	12.500 "	7
1834-RC-1612	16" x 12"	2.500 "	2.500 "	13.500 "	9
1834-RC-1814	18" x 14"	2.500 "	2.500 "	14.500 "	10
Rolled reducer couplings also available					

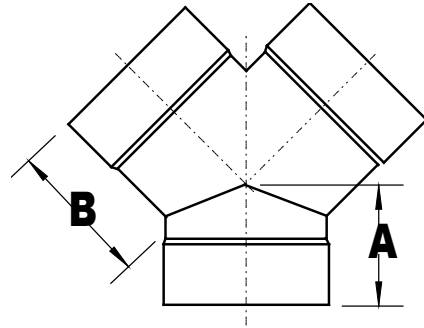
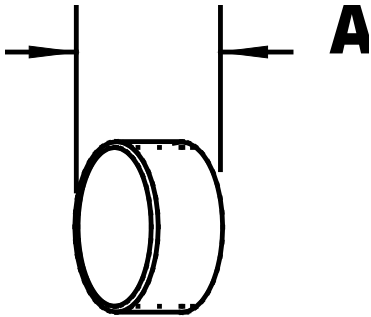


# HARRISON MACHINE & PLASTIC CORPORATION

11614 ST. RT. 88 | GARRETTSVILLE, OH

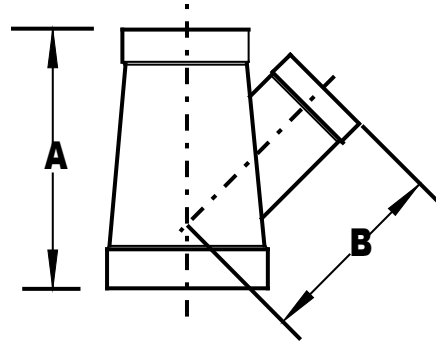
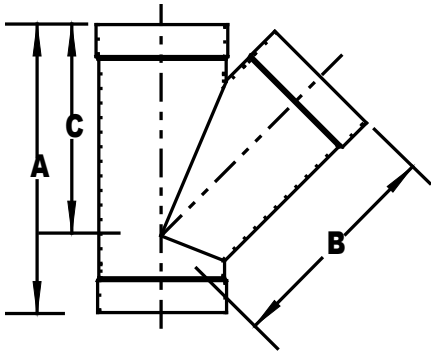
Ph. 330.527.5641 | Fax 330.527.5640

HMP 2020



Cap (Belled)			
Part No.	Size	A	Approx. Wgt (Lbs)
1834-CA-02	2 "	2.000 "	0.25
1834-CA-03	3 "	2.000 "	0.5
1834-CA-04	4 "	2.000 "	0.5
1834-CA-05	5 "	2.000 "	0.75
1834-CA-06	6 "	2.000 "	1
1834-CA-08	8 "	2.000 "	2
1834-CA-10	10 "	2.000 "	2
1834-CA-12	12 "	2.000 "	3
1834-CA-14	14 "	2.000 "	3
1834-CA-16	16 "	2.000 "	3
1834-CA-18	18 "	2.000 "	4
1834-CA-20	20 "	2.000 "	5
1834-CA-24	24 "	2.000 "	7

True Wye Belled				
Part No.	Size	A	B	Approx. Wgt (Lbs)
1834-TY-02	2 "	2.750 "	2.375 "	0.5
1834-TY-03	3 "	3.250 "	4.750 "	2
1834-TY-04	4 "	4.000 "	5.250 "	3
1834-TY-05	5 "	4.375 "	5.750 "	4.5
1834-TY-06	6 "	4.437 "	6.250 "	3
1834-TY-08	8 "	5.812 "	8.375 "	6
1834-TY-10	10 "	6.250 "	9.500 "	9
1834-TY-12	12 "	6.656 "	10.250 "	11
1834-TY-14	14 "	6.875 "	11.000 "	13
1834-TY-16	16 "	7.312 "	12.000 "	16
1834-TY-18	18 "	7.750 "	13.000 "	23
1834-TY-20	20 "	8.250 "	13.750 "	30
1834-TY-24	24 "	10.750 "	18.000 "	49

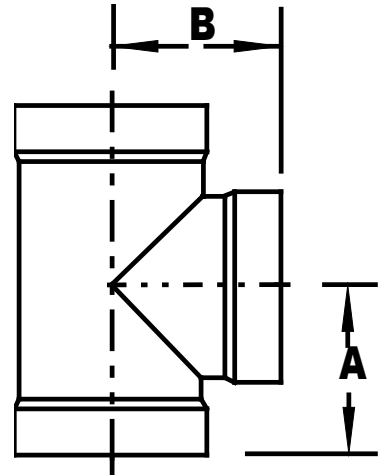


<b>45° Wye Belled</b>					
<b>Part No.</b>	<b>Size</b>	<b>A</b>	<b>B</b>	<b>C</b>	<b>Approx. Wgt (Lbs)</b>
1834-Y-0604	6 X 6 X 4 "	15.875 "	10.750 "	11.750 "	5
1834-Y-06	6 X 6 X 6 "	18.875 "	13.250 "	13.250 "	6
1834-Y-0804	8 X 8 X 4 "	16.375 "	12.250 "	13.062 "	6
1834-Y-0806	8 X 8 X 6 "	19.375 "	13.312 "	14.500 "	7
1834-Y-08	8 X 8 X 8 "	22.187 "	15.875 "	15.875 "	9
1834-Y-1006	10 X 10 X 6 "	20.375 "	15.312 "	16.250 "	9
1834-Y-1008	10 X 10 X 8 "	23.187 "	16.312 "	17.750 "	11
1834-Y-10	10 X 10 X 10 "	26.250 "	19.312 "	19.312 "	13
1834-Y-1208	12 X 12 X 8 "	23.312 "	17.750 "	18.750 "	13
1834-Y-1210	12 X 12 X 10 "	26.375 "	18.750 "	20.250 "	15
1834-Y-12	12 X 12 X 12 "	29.250 "	21.687 "	21.687 "	17
1834-Y-1410	14 X 14 X 10 "	26.250 "	19.625 "	20.875 "	16
1834-Y-1412	14 X 14 X 12 "	29.000 "	20.750 "	22.250 "	19
1834-Y-14	14 X 14 X 14 "	30.750 "	23.125 "	23.125 "	20
1834-Y-1612	16 X 16 X 12 "	29.000 "	22.125 "	23.375 "	21
1834-Y-1614	16 X 16 X 14 "	30.750 "	22.750 "	24.250 "	23
1834-Y-16	16 X 16 X 16 "	33.625 "	25.625 "	25.625 "	25
1834-Y-1814	18 X 18 X 14 "	31.250 "	24.250 "	25.375 "	26
1834-Y-1816	18 X 18 X 16 "	34.125 "	25.375 "	26.875 "	30
1834-Y-18	18 X 18 X 18 "	37.000 "	28.250 "	28.250 "	34
1834-Y-20	20 X 20 X 20 "	40.750 "	31.125 "	31.125 "	45
1834-Y-2418	24 X 24 X 18 "	38.000 "	30.750 "	31.750 "	49
1834-Y-24	24 X 24 X 24 "	46.500 "	36.000 "	36.000 "	71





Tee Belled				
Part No.	Size	A	B	Approx. Wgt (Lbs)
1834-T-0604	6 x 6 x 4 "	7.312 "	6.500 "	4
1834-T-06	6 x 6 x 6 "	7.562 "	7.562 "	4
1834-T-0804	8 x 8 x 4 "	8.312 "	6.750 "	5
1834-T-0806	8 x 8 x 6 "	8.562 "	7.812 "	5
1834-T-08	8 x 8 x 8 "	8.812 "	8.812 "	6
1834-T-1006	10 x 10 x 6 "	9.625 "	8.062 "	7
1834-T-1008	10 x 10 x 8 "	9.875 "	9.062 "	8.5
1834-T-10	10 x 10 x 10 "	10.125 "	10.125 "	10.5
1834-T-1206	12 x 12 x 6 "	10.625 "	8.062 "	8
1834-T-1208	12 x 12 x 8 "	10.875 "	9.062 "	9.5
1834-T-1210	12 x 12 x 10 "	11.125 "	10.125 "	11.5
1834-T-12	12 x 12 x 12 "	11.125 "	11.125 "	12
1834-T-1410	14 x 14 x 10 "	11.750 "	10.125 "	12
1834-T-1412	14 x 14 x 12 "	11.750 "	11.125 "	14.5
1834-T-14	14 x 14 x 14 "	11.750 "	11.750 "	16
1834-T-1612	16 x 16 x 12 "	12.750 "	11.125 "	15.5
1834-T-1614	16 x 16 x 14 "	12.750 "	11.750 "	17
1834-T-16	16 x 16 x 16 "	12.750 "	12.750 "	20
1834-T-1814	18 x 18 x 14 "	13.750 "	12.000 "	19.5
1834-T-1816	18 x 18 x 16 "	13.750 "	13.000 "	22
1834-T-18	18 x 18 x 18 "	14.000 "	14.000 "	26.5
1834-T-20	20 x 20 x 20 "	15.500 "	15.500 "	35
1834-T-2418	24 x 24 x 18 "	17.000 "	14.500 "	37
1834-T-24	24 x 24 x 24 "	17.500 "	17.500 "	55



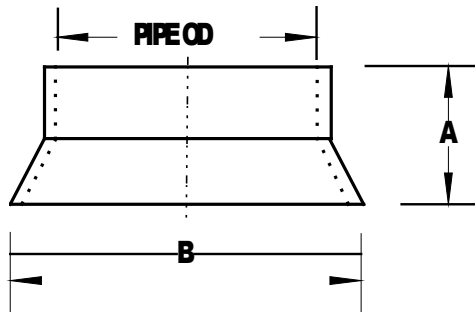


# HARRISON MACHINE & PLASTIC CORPORATION

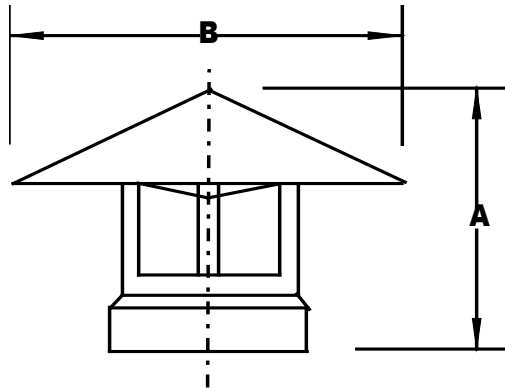
11614 ST. RT. 88 | GARRETTSVILLE, OH

Ph. 330.527.5641 | Fax 330.527.5640

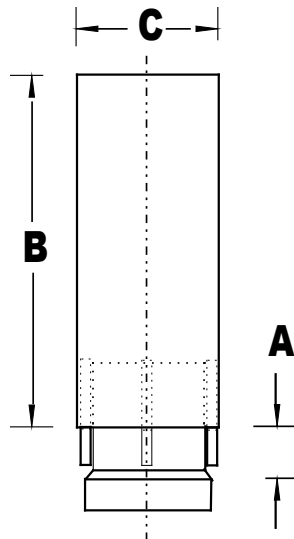
HMP 2020



Rainskirt Belled				
Part No.	Size	A	B	Approx. Wgt (Lbs)
1834-RS-02	2 "	2.250 "	4.500 "	0.5
1834-RS-03	3 "	2.625 "	5.500 "	1
1834-RS-04	4 "	4.000 "	6.875 "	1
1834-RS-05	5 "	4.000 "	8.000 "	2
1834-RS-06	6 "	4.000 "	8.875 "	1
1834-RS-08	8 "	4.000 "	11.375 "	2
1834-RS-10	10 "	4.000 "	13.625 "	2
1834-RS-12	12 "	4.000 "	16.250 "	2
1834-RS-14	14 "	4.000 "	17.000 "	2.5
1834-RS-16	16 "	4.000 "	19.000 "	3
1834-RS-18	18 "	4.000 "	22.000 "	3
1834-RS-20	20 "	6.000 "	23.625 "	5
1834-RS-24	24 "	8.000 "	27.000 "	9

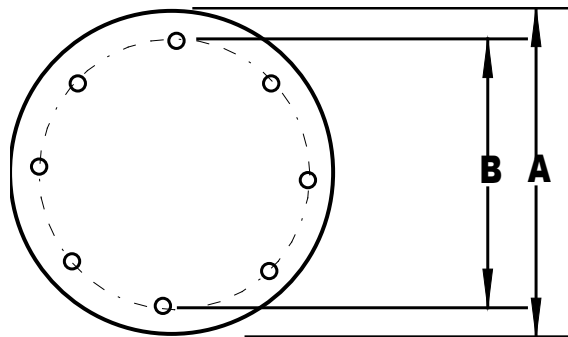


Raincap 'Style A' Belled				
Part No.	Size	A	B	Approx. Wgt (Lbs)
1834-WCA-02	2 "	8.000 "	4.000 "	1
1834-WCA-03	3 "	8.500 "	6.000 "	2
1834-WCA-04	4 "	9.000 "	8.000 "	2
1834-WCA-05	5 "	9.500 "	10.000 "	3
1834-WCA-06	6 "	10.500 "	12.000 "	3
1834-WCA-08	8 "	12.250 "	16.000 "	5
1834-WCA-10	10 "	13.500 "	20.000 "	7
1834-WCA-12	12 "	15.250 "	23.000 "	10
1834-WCA-14	14 "	16.000 "	28.000 "	13
1834-WCA-16	16 "	16.750 "	32.000 "	16
1834-WCA-18	18 "	17.500 "	36.000 "	21
1834-WCA-20	20 "	18.500 "	40.000 "	26
1834-WCA-24	24 "	19.000 "	44.000 "	33

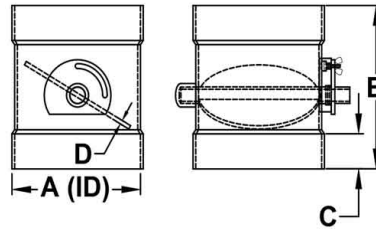
**Raincap 'Style B'**  
**Belled**

Part No.	Size	A	B	C	Approx. Wgt (Lbs)
1834-WCB-02	2 "	6.000 "	8.000 "	3.500 "	2
1834-WCB-03	3 "	6.000 "	12.000 "	4.500 "	4
1834-WCB-04	4 "	6.000 "	16.000 "	6.625 "	6
1834-WCB-05	5 "	8.000 "	18.000 "	7.375 "	9
1834-WCB-06	6 "	8.000 "	24.000 "	8.625 "	10
1834-WCB-08	8 "	8.000 "	32.000 "	10.750 "	15
1834-WCB-10	10 "	8.000 "	40.000 "	12.750 "	22
1834-WCB-12	12 "	8.000 "	48.000 "	14.000 "	28
1834-WCB-14	14 "	8.000 "	56.000 "	16.000 "	36
1834-WCB-16	16 "	8.000 "	64.000 "	18.000 "	48
1834-WCB-18	18 "	10.000 "	72.000 "	20.000 "	65
1834-WCB-20	20 "	10.000 "	80.000 "	22.000 "	71
1834-WCB-24	24 "	12.000 "	96.000 "	26.000 "	102

Zero pressure loss feature



Blind Flange					
				# Bolt	Approx. Wgt
Part No.	Size	A	B	Holes	(Lbs)
1834-BF-02	2 "	6.000 "	5.000 "	4	0.5
1834-BF-03	3 "	7.500 "	6.000 "	4	0.5
1834-BF-04	4 "	8.000 "	6.500 "	6	0.5
1834-BF-05	5 "	9.000 "	7.500 "	8	1
1834-BF-06	6 "	10.000 "	8.500 "	8	1
1834-BF-08	8 "	12.000 "	10.500 "	10	2
1834-BF-10	10 "	14.000 "	12.500 "	12	2.5
1834-BF-12	12 "	16.000 "	14.500 "	14	3.5
1834-BF-14	14 "	18.000 "	16.500 "	16	4
1834-BF-16	16 "	20.000 "	18.500 "	18	4.5
1834-BF-18	18 "	22.000 "	20.500 "	20	6.5
1834-BF-20	20 "	24.000 "	22.500 "	22	8
1834-BF-24	24 "	28.000 "	26.500 "	24	10
All flanges are 3/16" thick material					
All bolt holes are 5/16" diameter					



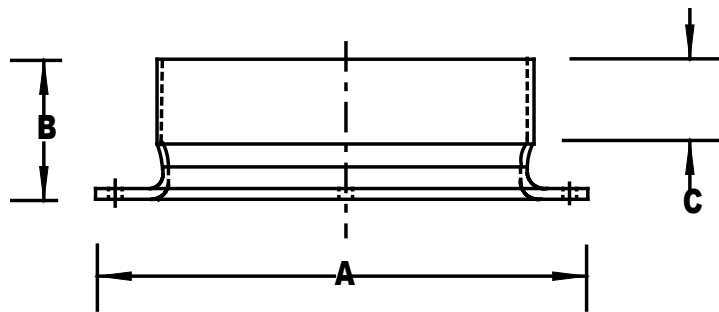
## Features and Benefits

- \*Materials of Construction:  
Body, damper plate & shaft:  
PVC, CPVC, PP, HDPE
- \*Locking hardware: stainless steel
- \*Allows for less than 5% air-flow restriction
- \*Offers an approximate 95% seal
- \*Optional positive seal shaft & damper plate
- \*90° damper plate operation
- \*Can be installed vertically or horizontally
- \*Sizes Offered: 2" thru 24"
- \*Available with belled, socket, flanged, or spigot ends
- \*Optional electric motor actuated
- \*All plastic internal parts
- \*Furnished with locking quadrant damper allowing for permanent position set

## Butterfly Damper

### Belled

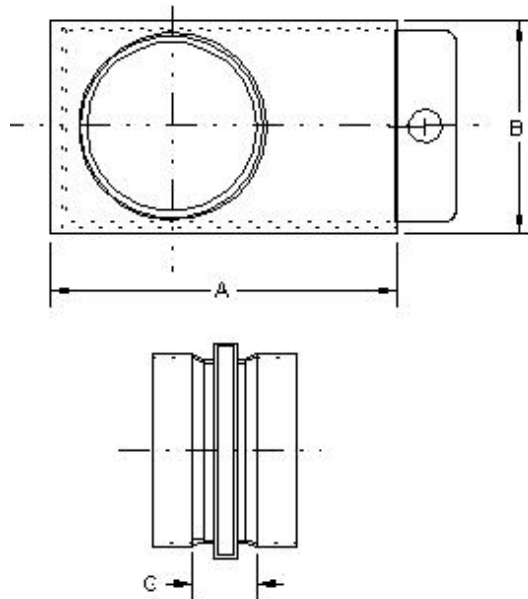
Part No.	Size	A	B	C	D	Approx. Wgt (Lbs)
1834-BD-02	2 "	2.375 "	6.750 "	1.500 "	.187 "	1
1834-BD-03	3 "	3.500 "	8.750 "	1.750 "	.187 "	2
1834-BD-04	4 "	4.500 "	9.500 "	2.000 "	.187 "	3
1834-BD-05	5 "	5.563 "	9.500 "	2.000 "	.187 "	3.5
1834-BD-06	6 "	6.625 "	9.500 "	2.000 "	.187 "	4
1834-BD-08	8 "	8.625 "	10.500 "	2.250 "	.187 "	5
1834-BD-10	10 "	10.750 "	11.750 "	2.500 "	.187 "	6
1834-BD-12	12 "	12.750 "	12.750 "	2.500 "	.187 "	8
1834-BD-14	14 "	14.000 "	13.750 "	2.500 "	.187 "	10
1834-BD-16	16 "	16.000 "	15.750 "	2.500 "	.187 "	11
1834-BD-18	18 "	18.000 "	17.750 "	2.500 "	.250 "	15
1834-BD-20	20 "	20.000 "	19.750 "	3.000 "	.250 "	20
1834-BD-24	24 "	24.000 "	23.750 "	3.000 "	.250 "	31



Flange Socket/Belled							
Part No.	Size	A	B	C	Bolt Circle	# Bolt Holes	Approx. Wgt (Lbs)
1834-SF-02	2 "	6.000 "	2.750 "	1.500 "	5.000 "	4	0.5
1834-SF-03	3 "	6.625 "	3.250 "	1.750 "	6.000 "	4	1
1834-SF-04	4 "	8.000 "	4.000 "	2.000 "	6.500 "	6	1
1834-SF-05	5 "	9.000 "	3.500 "	2.000 "	7.500 "	8	1.5
1834-SF-06	6 "	10.000 "	4.000 "	2.000 "	8.500 "	8	2
1834-SF-08	8 "	12.000 "	4.000 "	2.250 "	10.500 "	10	2
1834-SF-10	10 "	14.000 "	4.000 "	2.500 "	12.500 "	12	3
1834-SF-12	12 "	16.000 "	4.000 "	2.500 "	14.500 "	14	3
1834-SF-14	14 "	18.000 "	4.000 "	2.500 "	16.500 "	16	3
1834-SF-16	16 "	20.000 "	4.000 "	2.500 "	18.500 "	18	5
1834-SF-18	18 "	22.000 "	4.000 "	2.500 "	20.500 "	20	5
1834-SF-20	20 "	24.000 "	4.000 "	3.000 "	22.500 "	22	7
1834-SF-24	24 "	28.000 "	4.000 "	3.000 "	26.500 "	24	9
All flanges are 3/16" thick material All bolt holes are 5/16" diameter							

Note: Undrilled flanges also available

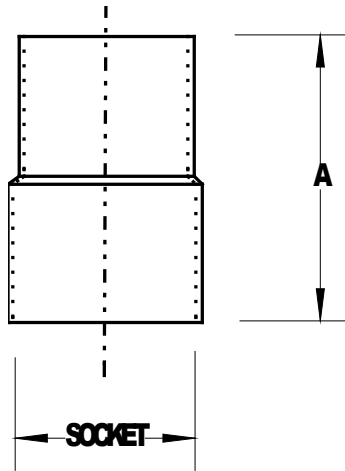
Flanges with 150# drilling available on a custom basis



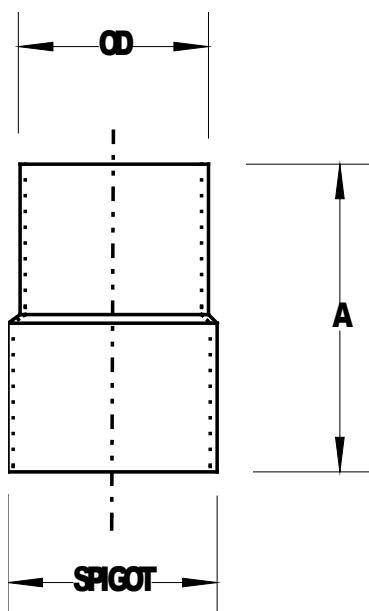
<b>Blastgate Belled</b>					
<b>Part No.</b>	<b>Size</b>	<b>A</b>	<b>B</b>	<b>C</b>	<b>Approx. Wgt (Lbs)</b>
1834-BG-02	2 "	6.000 "	3.750 "	1.000 "	1
1834-BG-03	3 "	7.000 "	4.880 "	3.250 "	2
1834-BG-04	4 "	8.000 "	5.560 "	3.250 "	3
1834-BG-05	5 "	11.000 "	8.880 "	5.000 "	3
1834-BG-06	6 "	11.000 "	8.880 "	5.000 "	4
1834-BG-08	8 "	14.000 "	10.250 "	4.000 "	6
1834-BG-10	10 "	17.000 "	12.380 "	4.500 "	8
1834-BG-12	12 "	20.000 "	13.880 "	4.500 "	11
1834-BG-14	14 "	21.750 "	15.500 "	4.500 "	11
1834-BG-16	16 "	23.000 "	17.500 "	4.250 "	15
1834-BG-18	18 "	28.000 "	19.500 "	4.250 "	20
1834-BG-20	20 "	30.750 "	21.500 "	5.750 "	27
1834-BG-24	24 "	34.000 "	25.500 "	5.750 "	31

Gate is 3/16" thick material.





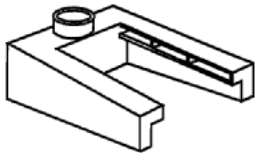
<b>Flex Hose Adapter Hose Spigot x Duct Bell</b>				
<b>Part No.</b>	<b>Size</b>	<b>Bell</b>	<b>A</b>	<b>Approx. Wgt (Lbs)</b>
	<b>O.D. (Hose)</b>	<b>Socket (Duct)</b>		
1834-FHA-02	2 "	2.375 "	5.500 "	0.5
1834-FHA-03	3 "	3.500 "	6.000 "	1
1834-FHA-04	4 "	4.500 "	7.000 "	1.5
1834-FHA-05	5 "	5.563 "	7.000 "	2
1834-FHA-06	6 "	6.625 "	7.500 "	2
1834-FHA-08	8 "	8.625 "	9.000 "	3
1834-FHA-10	10 "	10.750 "	9.000 "	4
1834-FHA-12	12 "	12.750 "	9.000 "	4
1834-FHA-14	14 "	14.000 "	8.000 "	4
1834-FHA-16	16 "	16.000 "	8.000 "	4.5
1834-FHA-18	18 "	18.000 "	8.000 "	5



Flex Hose Adapter Hose Spigot x Duct Spigot				
Part No.	Size	Spigot	A	Approx. Wgt (Lbs)
	O.D. (Hose)	P.E. (Duct)		
1833-FHA-02	2 "	2.375 "	5.500 "	0.5
1833-FHA-03	3 "	3.500 "	6.000 "	1
1833-FHA-04	4 "	4.500 "	7.000 "	1.5
1833-FHA-05	5 "	5.563 "	7.000 "	2
1833-FHA-06	6 "	6.625 "	7.500 "	2
1833-FHA-08	8 "	8.625 "	9.000 "	3
1833-FHA-10	10 "	10.750 "	9.000 "	4
1833-FHA-12	12 "	12.750 "	9.000 "	4
1833-FHA-14	14 "	14.000 "	8.000 "	4
1833-FHA-16	16 "	16.000 "	8.000 "	4.5
1833-FHA-18	18 "	18.000 "	8.000 "	5



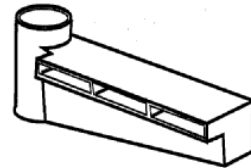
Hoods are fabricated to Harrison standards or customer specifications.



**Double Lateral Hood**

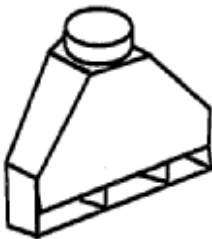
Lengths from 24" to 96"

Widths from 18" to 66"



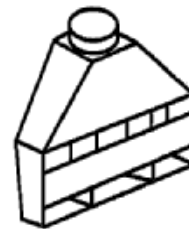
**Single Lateral Hood**

Lengths from 24" to 18 ft.



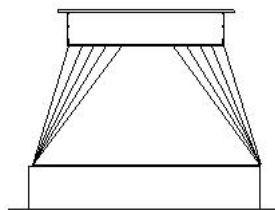
**Single Slot Rear Exhaust Hood**

Widths from 18' to 72"



**Double Slot Rear Exhaust Hood**

Widths from 18' to 72"



**Transitions**

Transitions (square to round, rectangular to round) with socket or flanged connections available per customer specifications. Transitions to dis-similar materials also available. Please contact us for pricing.